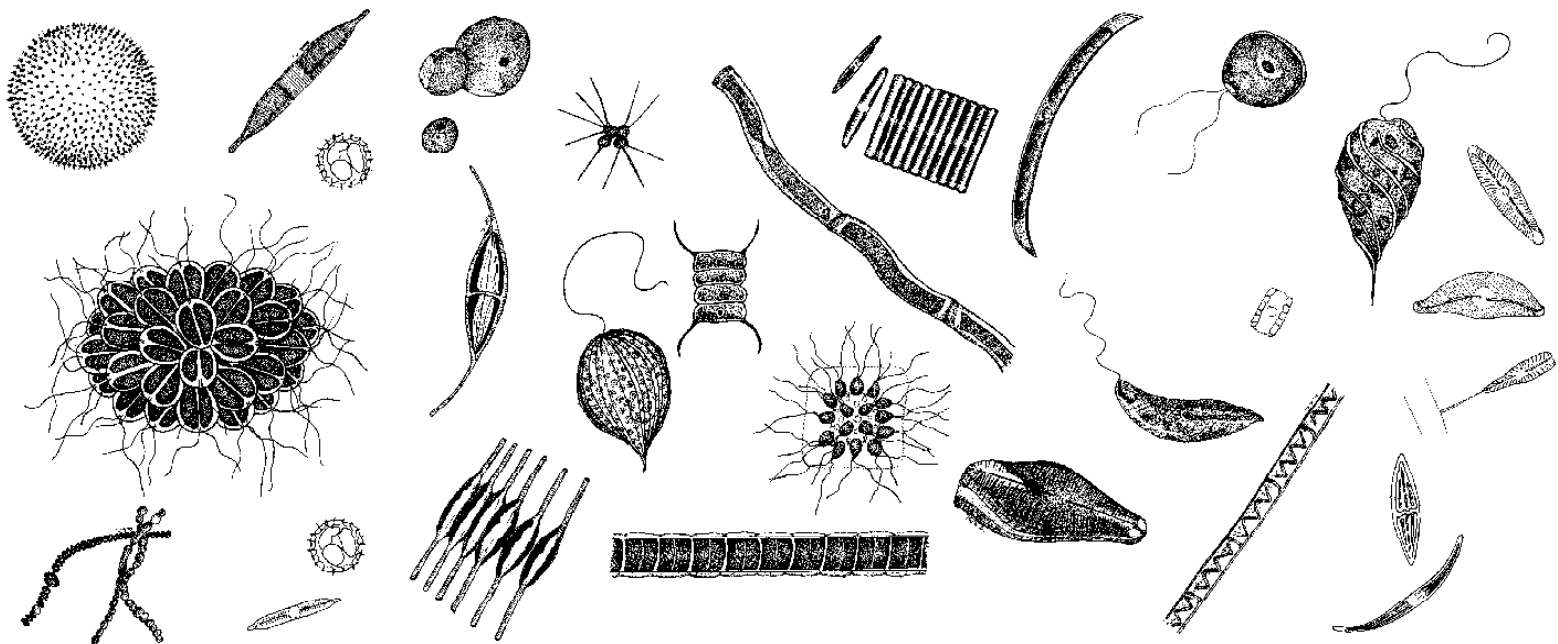
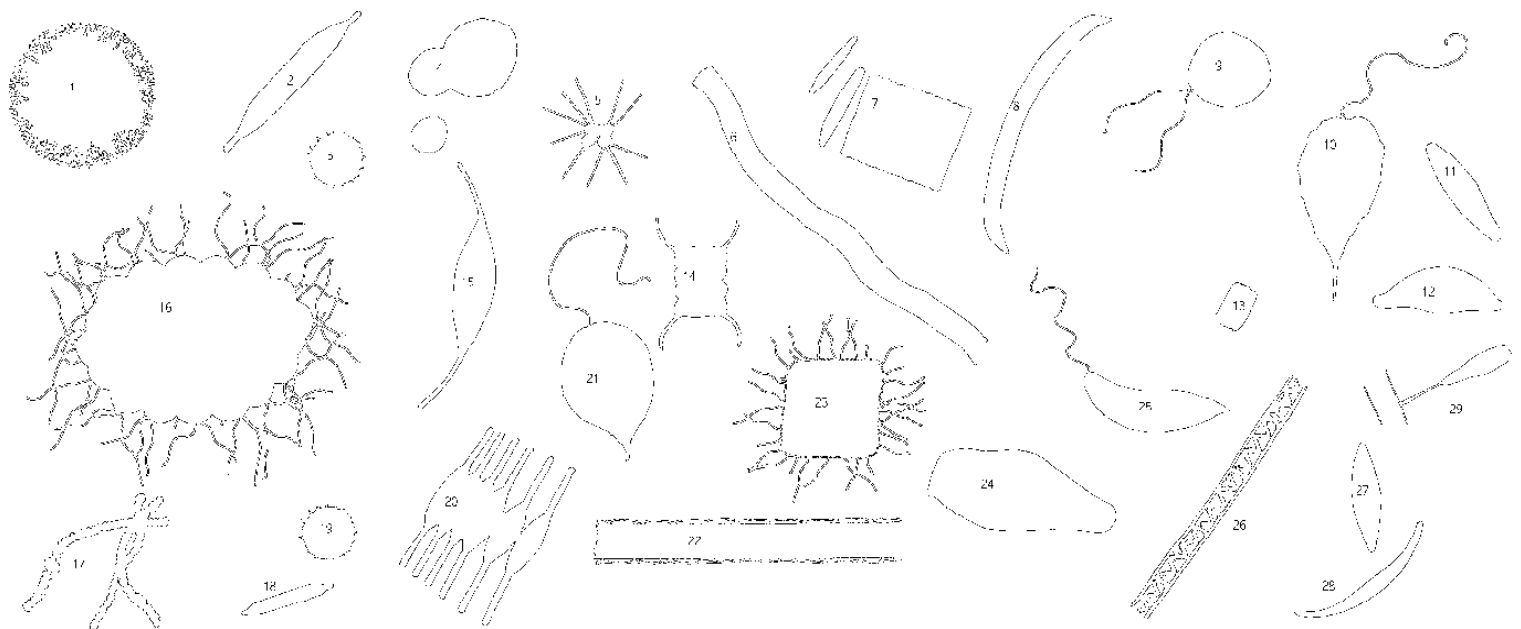


Some plankton of estuarine wetlands in SA



Key to some plankton of estuarine wetlands of SA



- | | | | | | | | |
|---|--------------|----|---------------|----|------------|----|-------------|
| 1 | Volvox | 9 | Chlamydomonas | 17 | Anabaena | 25 | Euglena |
| 2 | Nitzschia | 10 | Phacus | 18 | Fragilaria | 26 | Spirogyra |
| 3 | Cyclotella | 11 | Navicula | 19 | Cyclotella | 27 | Chlosterium |
| 4 | Chlorella | 12 | Cymbella | 20 | Fragilaria | 28 | Chlosterium |
| 5 | Micractinium | 13 | Coscinodiscus | 21 | Phacus | 29 | Gomphonema |
| 6 | Mougeotia | 14 | Scenedesmus | 22 | Zygnema | | |
| 7 | Fragilaria | 15 | Nitzschia | 23 | Gonium | | |
| 8 | Chlosterium | 16 | Synura | 24 | Gomphonema | | |